

The background image is a coastal scene. In the center, a large, rounded island sits on the horizon. The foreground is dominated by dark, jagged rock formations on the right and left sides, with the sea in between. The sky is a pale, hazy blue.

BINHAI PARC BELT

INITIAL PROPOSAL FOR DALIAN COASTAL LINEAR PARK

概念性景观总体规划 -- 初步提案



品牌塑造 Brand Establishment



价值提升 Value Enhancement



城－岸共融

Connection to City Life



4 场所精神和生态设计 Site Specific Place Making

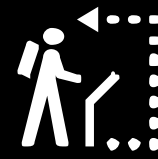


打造滨海人气社区 Coastal Community

COLLECTIVE HUMAN EXPERIENCE
CULTURAL SOCIAL IDENTITY
人文色特与社群综合体验

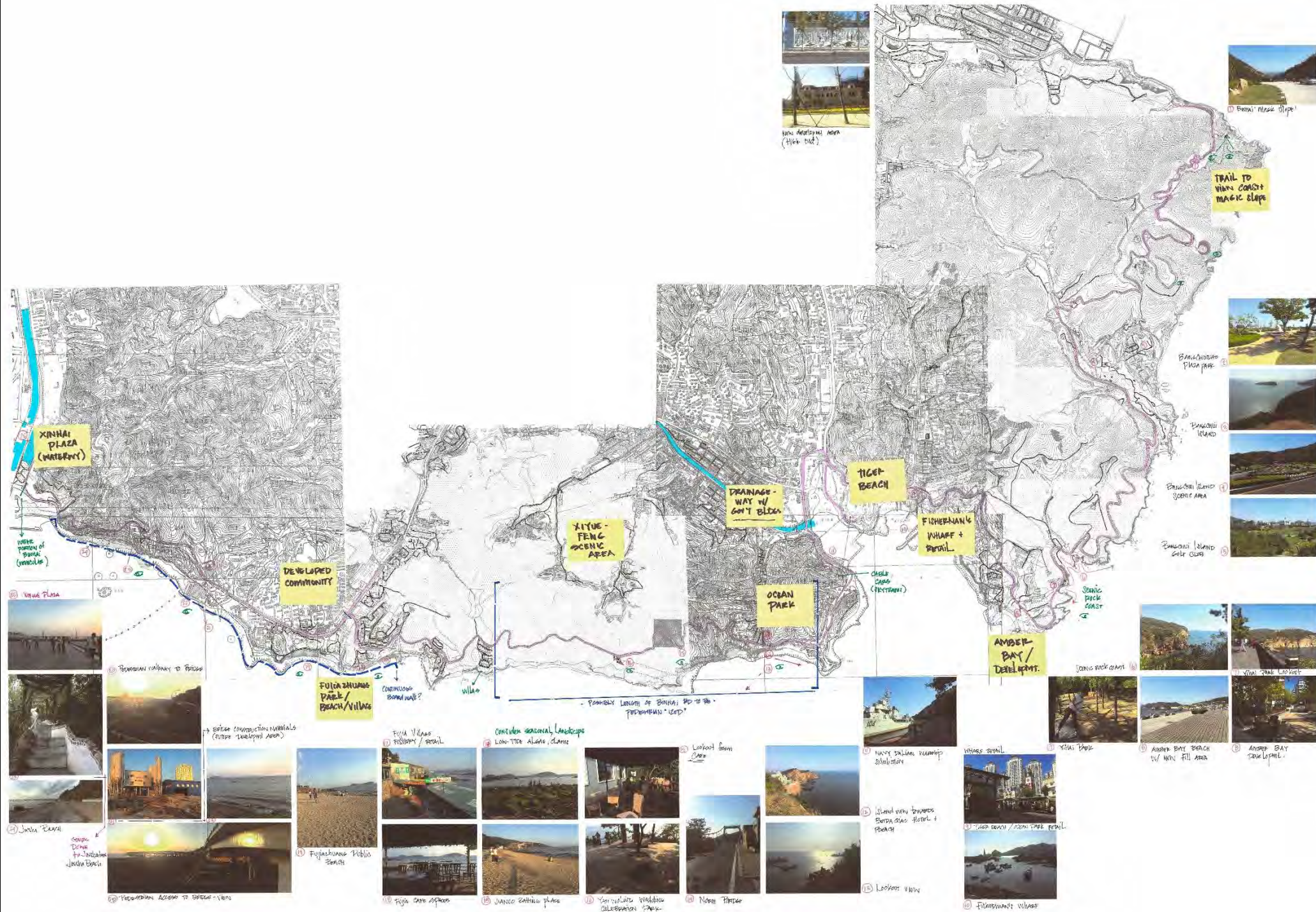
ENHANCE — EXPAND — CONNECT

提高 — 发展 — 连接



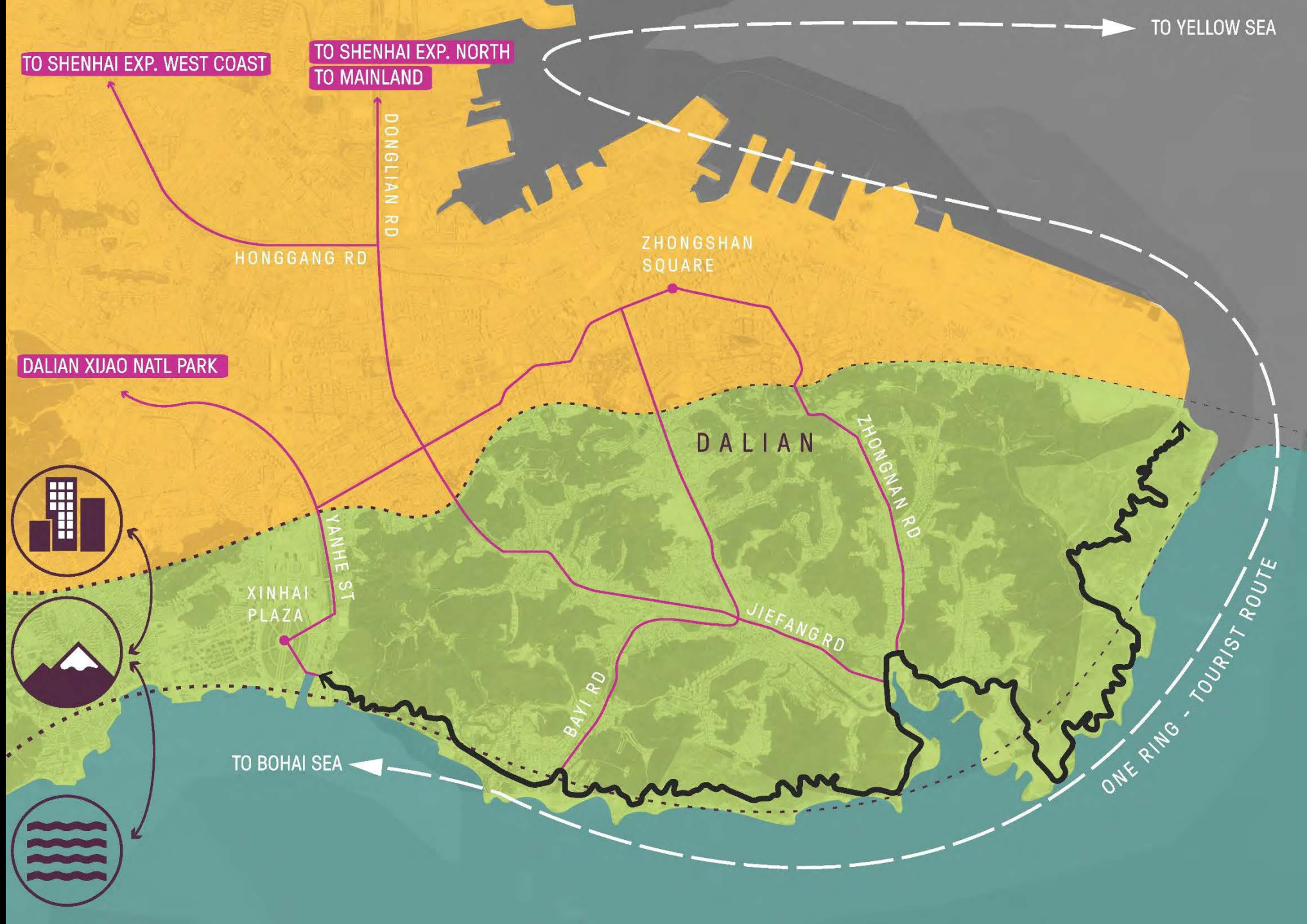
Site Investigation

SITE INVENTORY

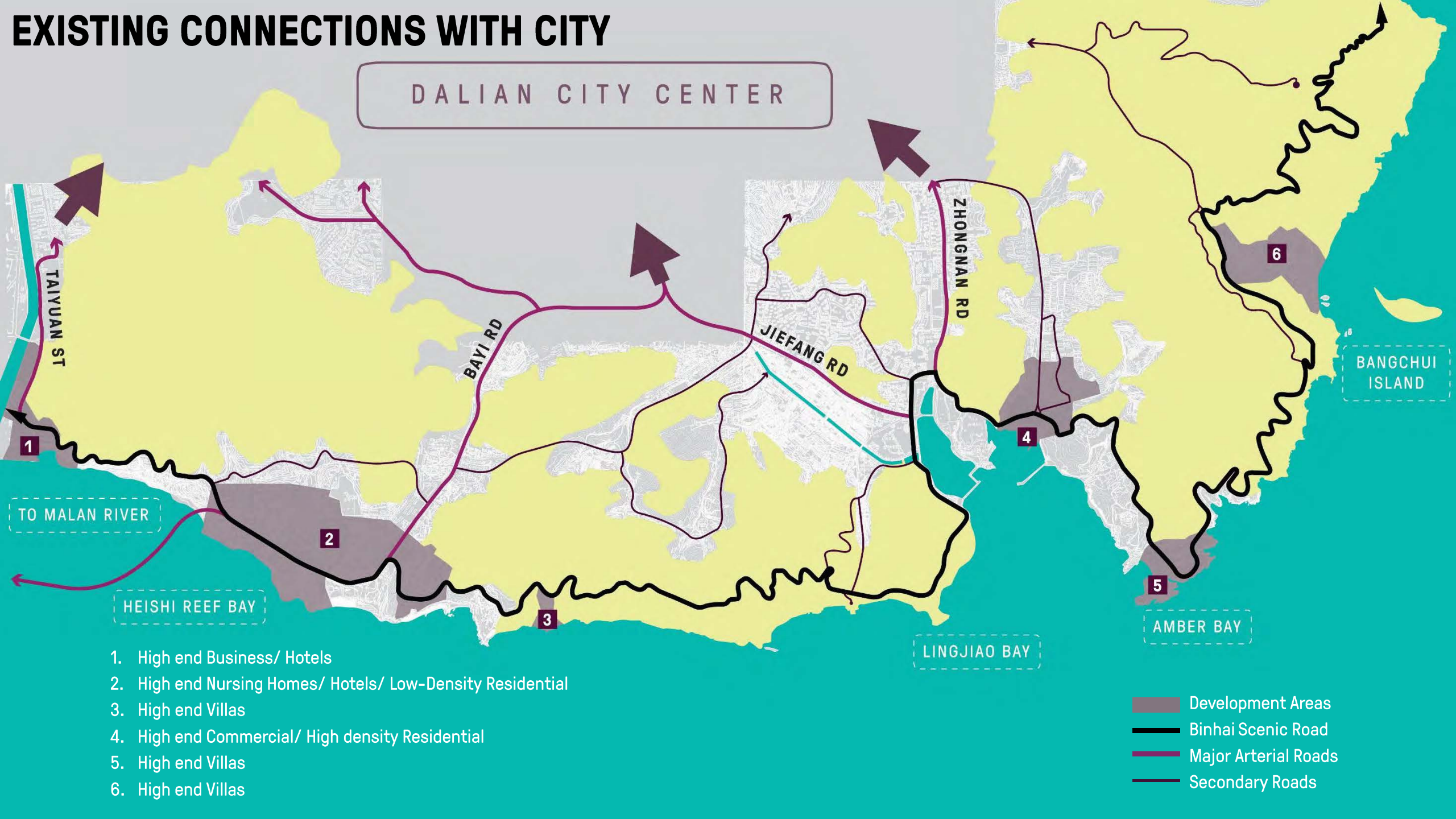


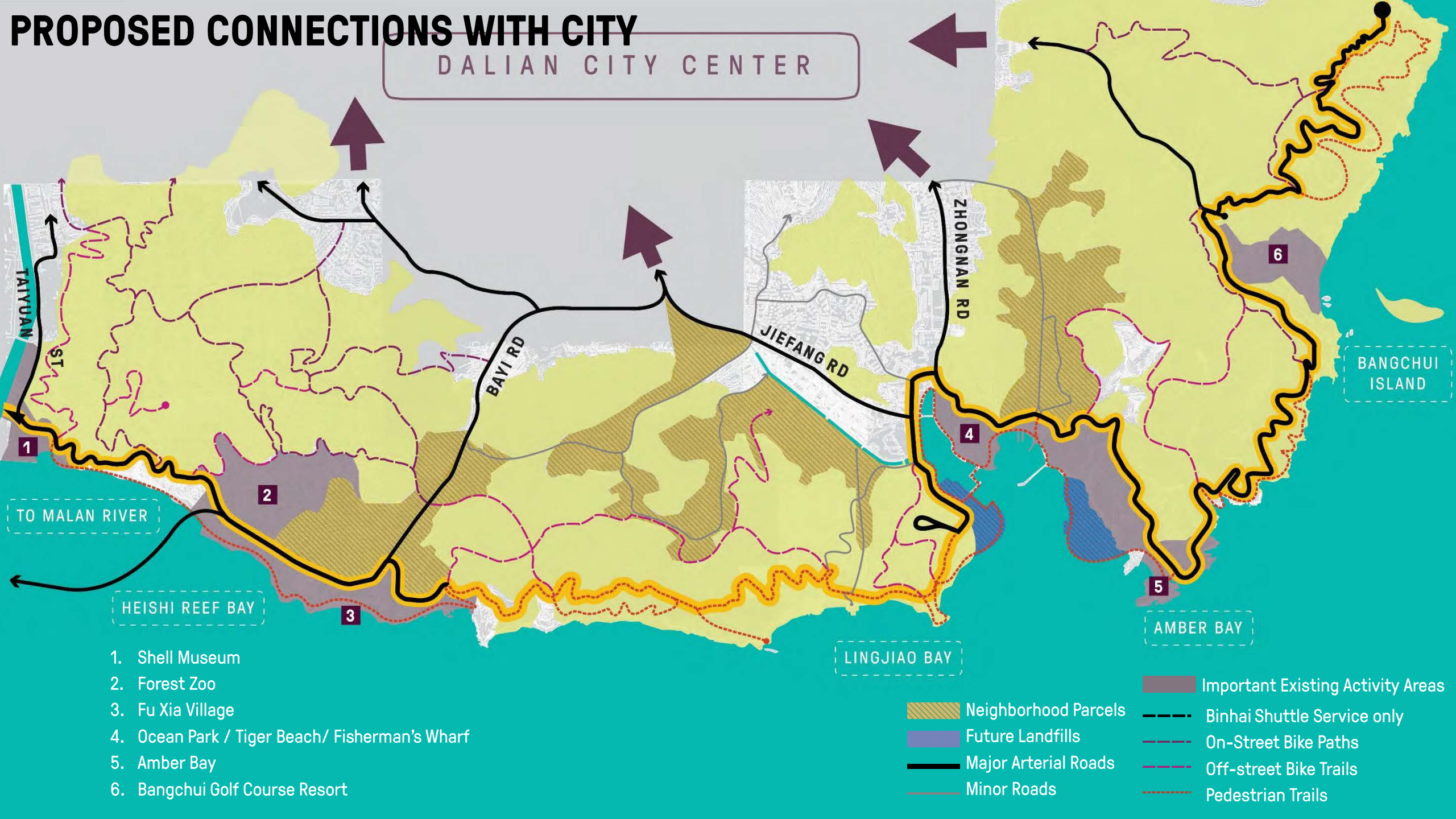
SITE CONTEXT

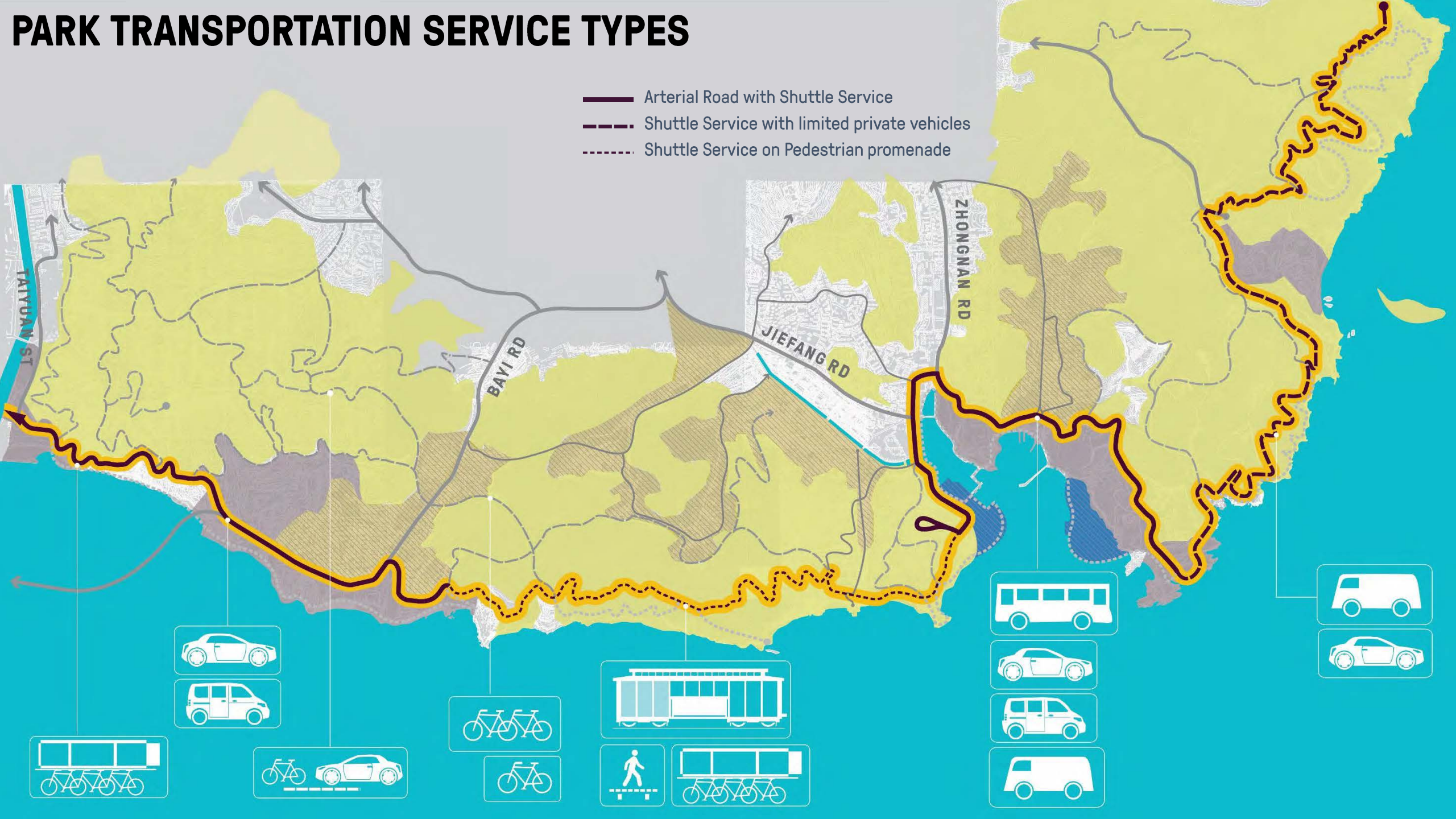
- CITY
- PARK/TERRAIN
- COAST



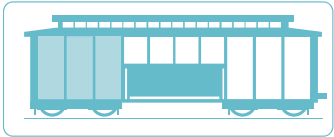
EXISTING CONNECTIONS WITH CITY



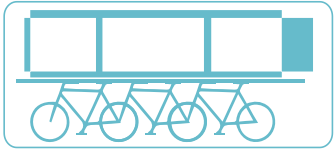




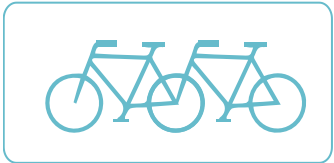
TRANSPORTATION TYPES 公园交通工具类型



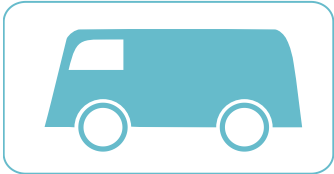
TROLLEY SERVICE (OPEN-AIR)



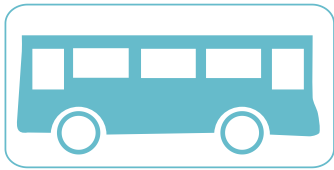
BEER BIKES



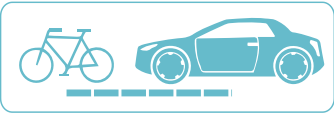
MULTI-USER BIKES



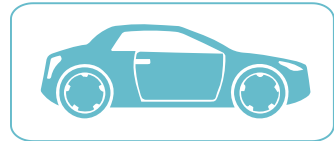
8-10 PERSON
ELECTRIC SHUTTLES



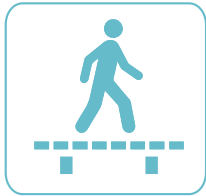
CITY BUSES



ON-STREET SHARED
BIKE LANE



PRIVATE VEHICLES



PEDESTRIAN PROMENADE



Roadway Improvement Typology

Bird Nest Mountain Segment – 4 KM



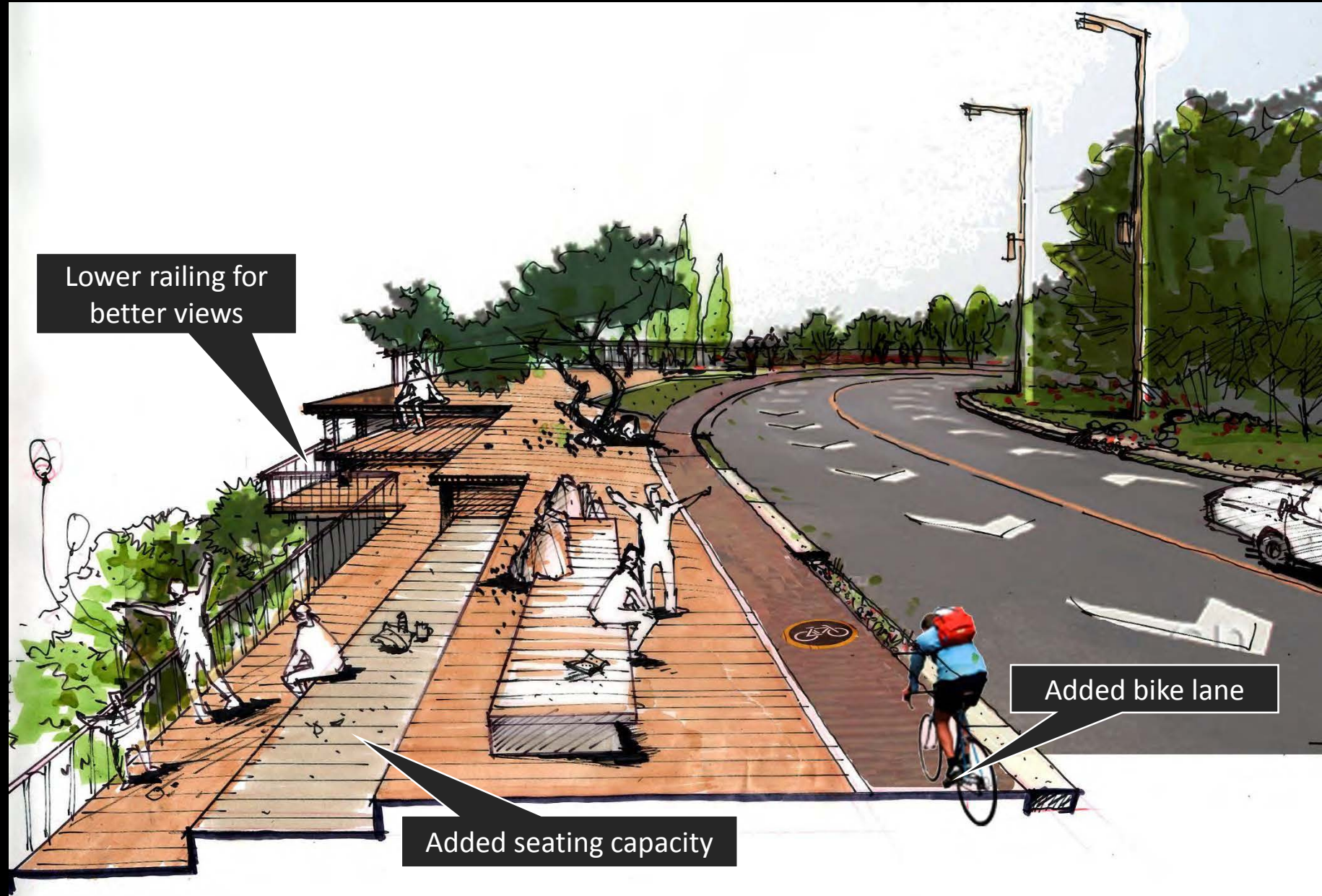
Option 1 - keeping it vehicular road

- Increase parking capacity along road
- Add trail connections to both hillside and waterfront

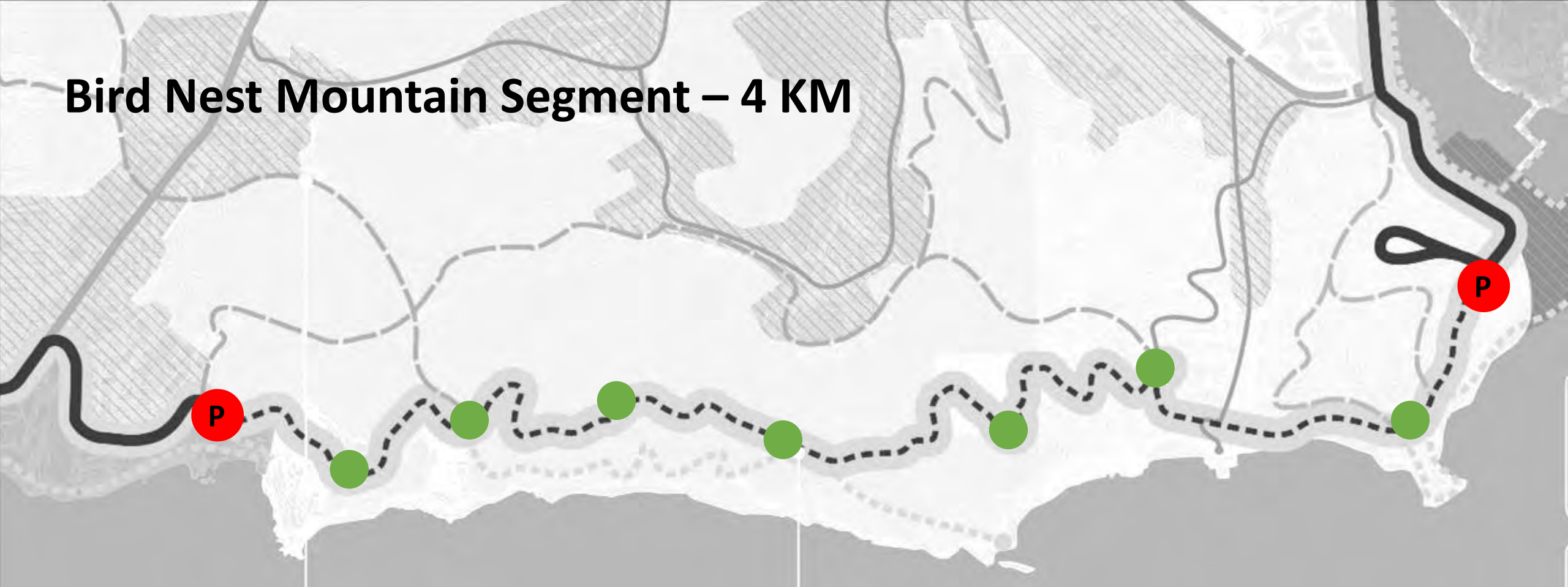
OPTION 1. SCENIC DRIVE



- Keep the Binhai road vehicular
- Extend the park trails uphill and downhill, connecting with waterfront and hillside
- Add bike path on sidewalk, reducing roadway width
- Increase parking capacity along Binhai



Bird Nest Mountain Segment – 4 KM



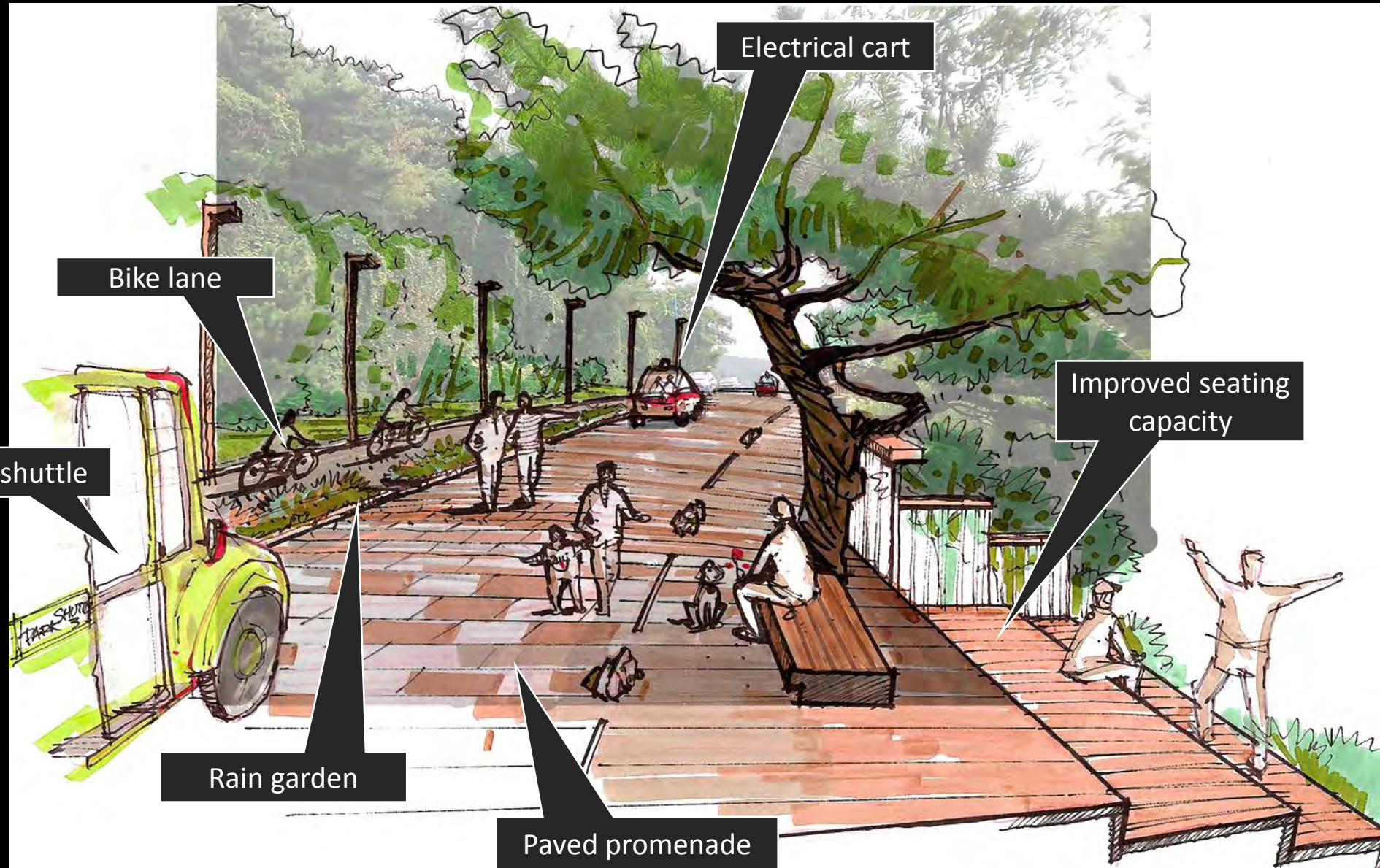
Option 2 - converting it to pedestrian promenade

Add major parking lots at both ends

Create a garden promenade for park electric shuttles, bikes and pedestrians

Curate resting points along the promenade including scenic spots, overlooks and nodes

OPTION 2. CARLESS COASTAL GARDEN PROMENADE



- Close the road at middle Binhai segment
- Redesign the roadway section to include independent bike lane, rain garden and pedestrian promenade
- Improve lighting and site furniture at linear park promenade

RAIN GARDEN INCORPORATED INTO GREENWAY PROMENADE

无车路面：增加雨水花园绿带

- 分隔自行车道与步行游园道
- 引入自然滨海植被，提倡生态美学
- 调节管理雨水径流，增加生态效益



Place making details



ROCK

Coastal Erosion Geology

+



TIMBER

Coastal Forest

=



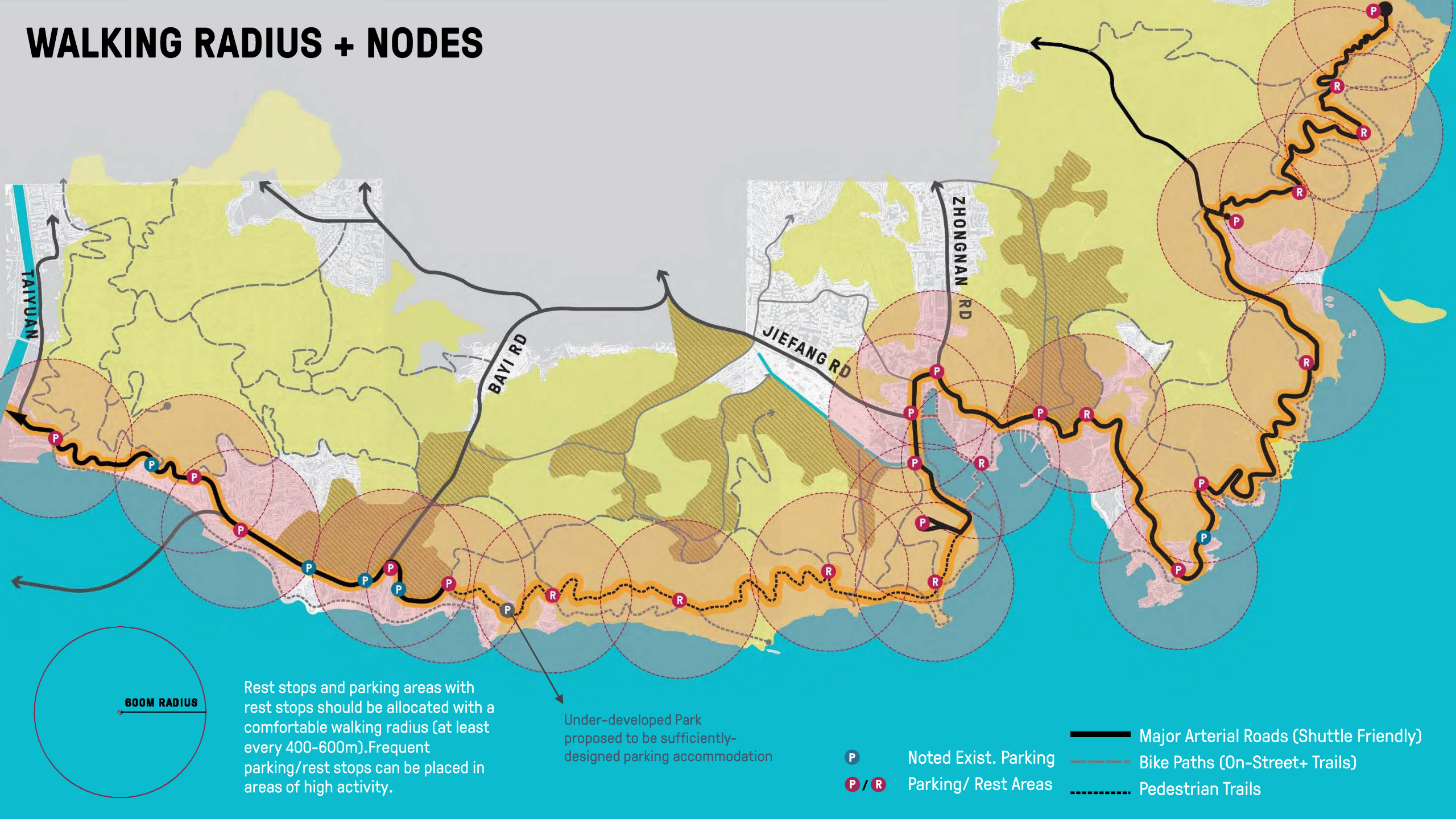
PARK BENCH

Seating Device

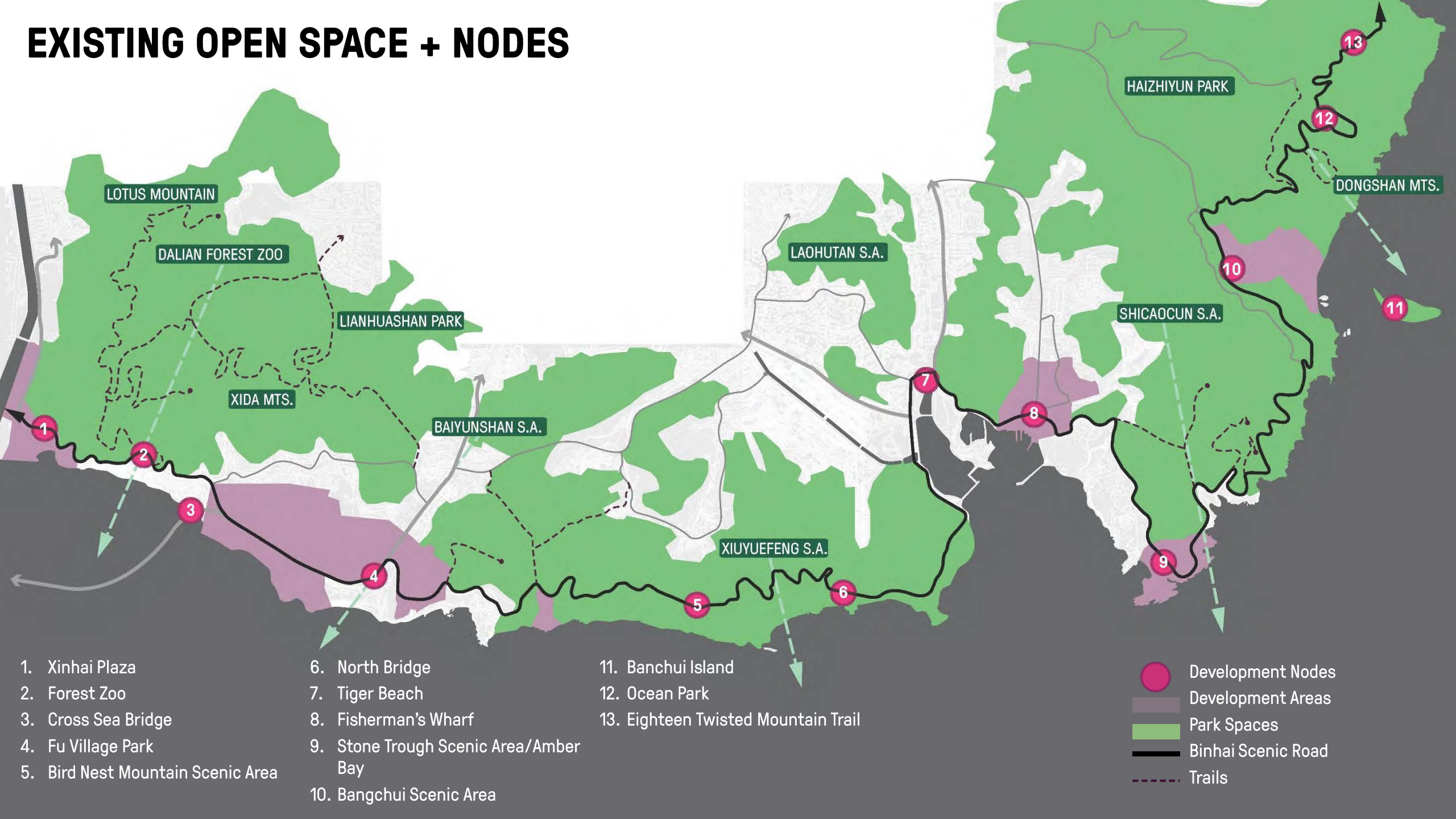
POTENTIAL WATER TAXI



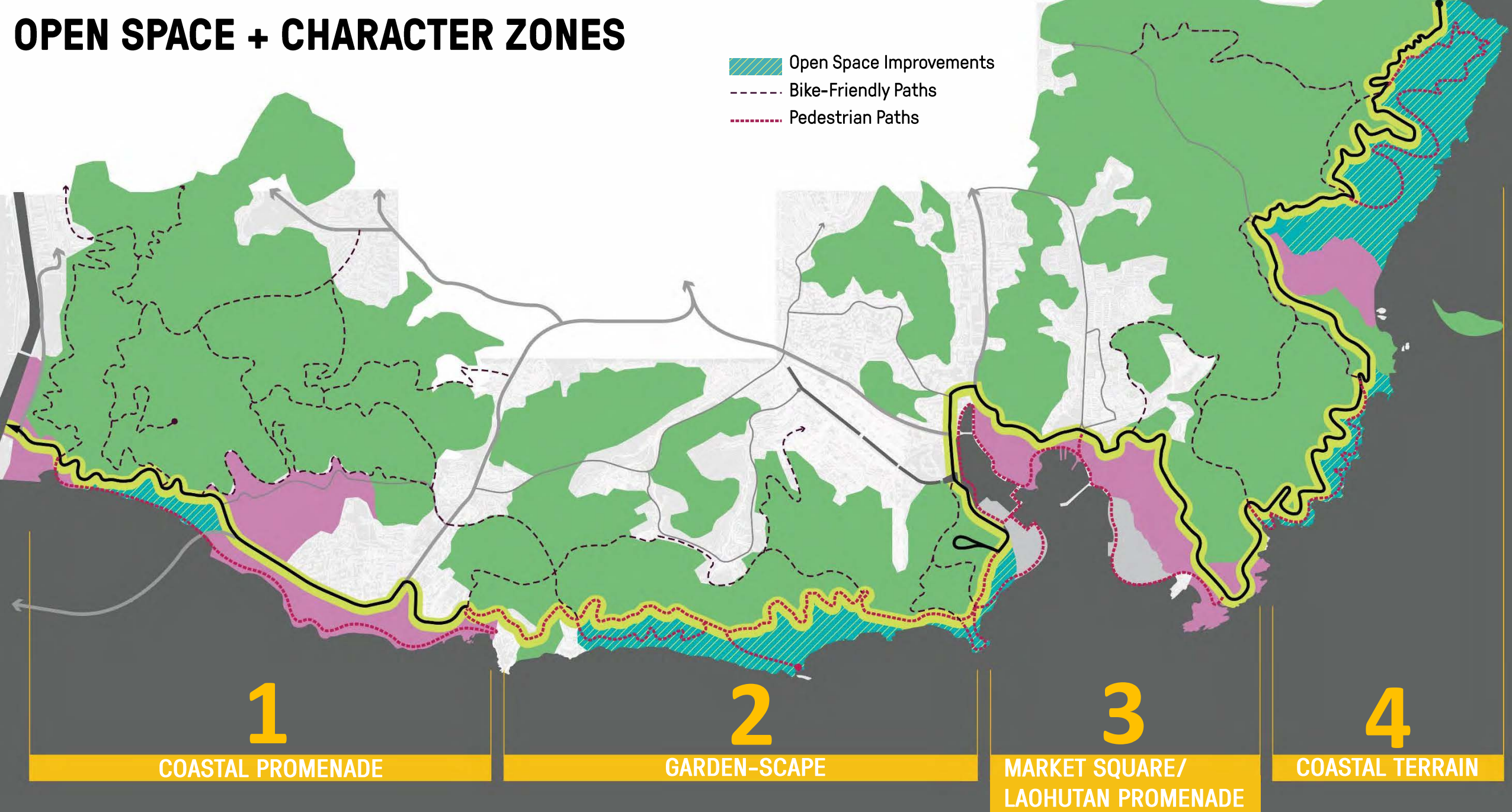
WALKING RADIUS + NODES



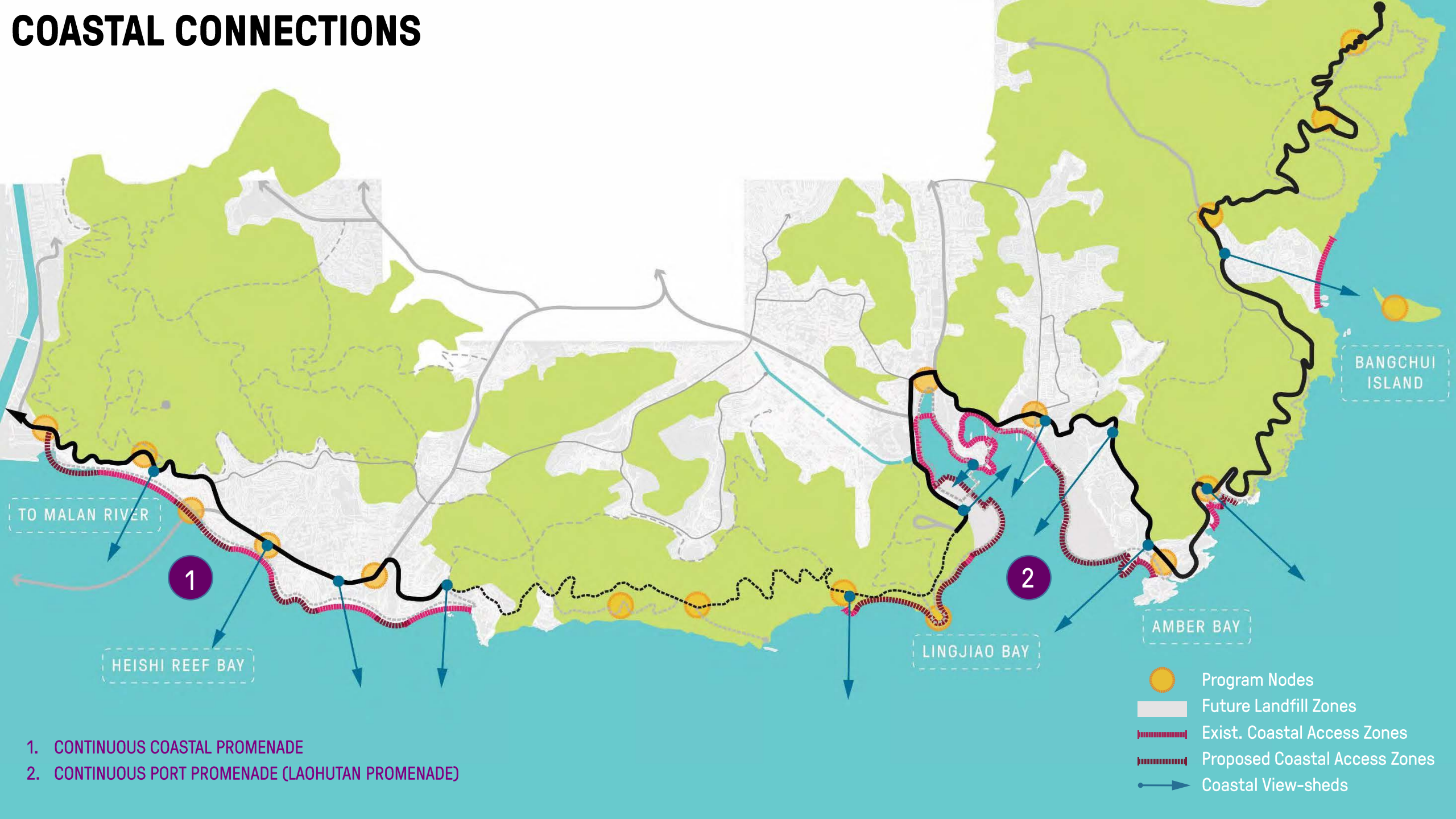
EXISTING OPEN SPACE + NODES



OPEN SPACE + CHARACTER ZONES

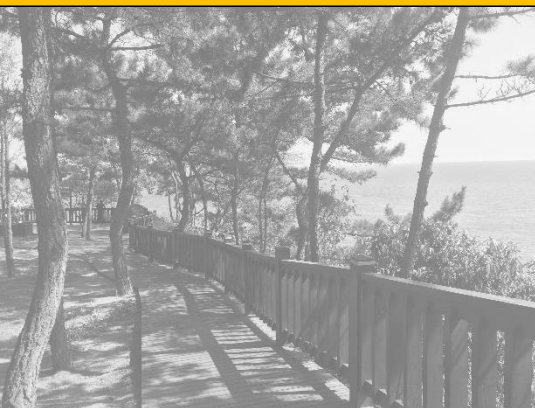


COASTAL CONNECTIONS



Coastal Place Making Impression

RECREATIONAL FUN



zip line

Tree houses

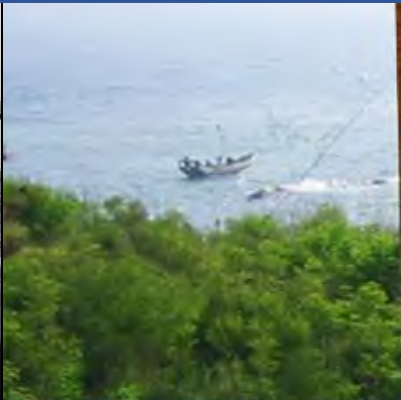
Secondary trail

Viewing deck



ZONE 2

ART FESTIVAL



Light festival

Sand painting

Art park pavilion



COMMUNITY GATHERING

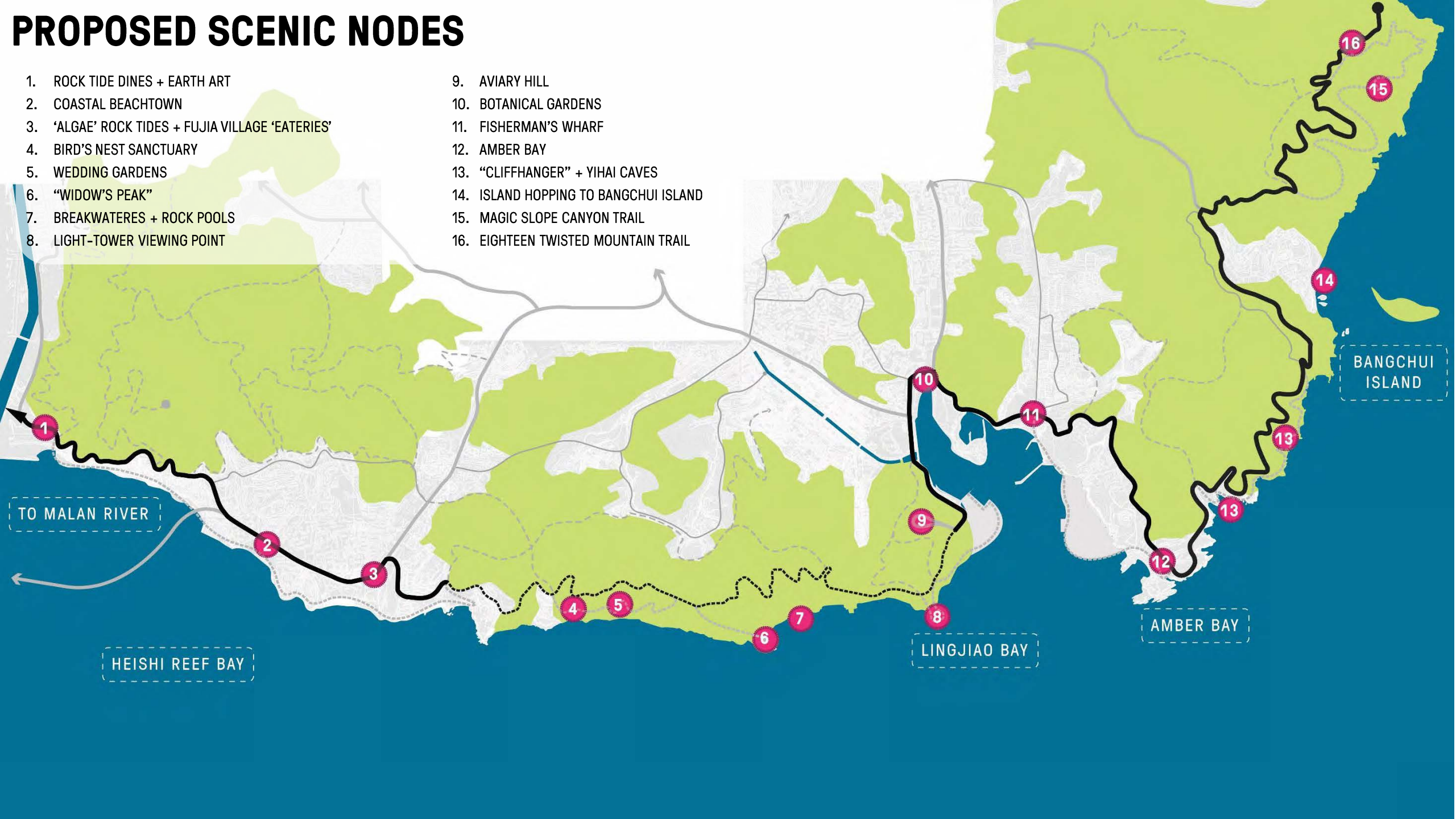


Photo Spot

Green algae beach

Seasonal market





CHARACTER ZONES + IMPORTANT NODES



1. ROCK TIDE DUNES + EARTH ART



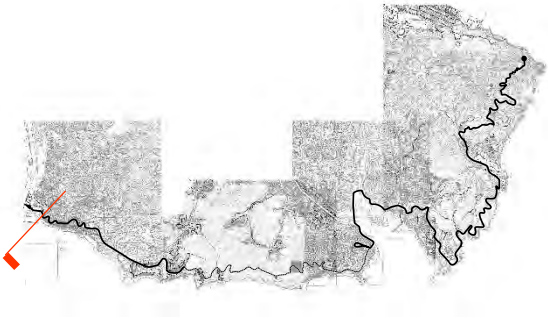
2. COASTAL BEACHTOWN



3. 'ALGAE' ROCK TIDES +
FUJIA VILLAGE 'EATERIES'

WEST BINHAI RD

COASTAL BEACHTOWN + PROMENADE



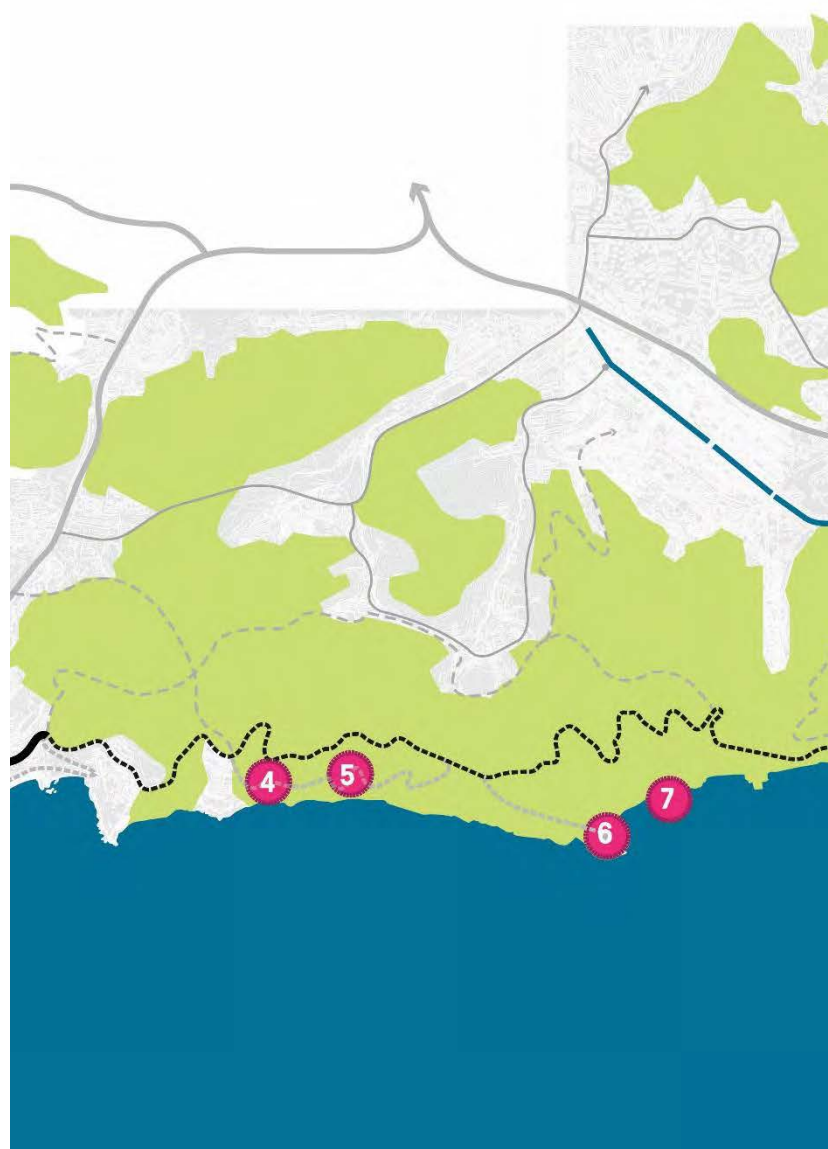
CHARACTER ZONES + IMPORTANT NODES



4. BIRD'S NEST SANCTUARY



5. WEDDING GARDENS



6. 'WIDOW'S PEAK'



7. BREAKWATERS + ROCK POOLS

GARDEN-SCAPE