

Shekou's urban public realm has long suffered from fast urbanization and lack of attractive parks and facilities for the ever growing population. Soon after the opening of Sea World, famous as a trendy urban lifestyle center, Shekou began upgrading its city building, particularly with the increased awareness of livable places for Shenzhen's future generations. Shekou coastal promenade will be a new addition of city's open space system, expressing the renewed culture and the city's desire of transforming this out-of-date industrial shoreline to a public waterfront. The once disconnected, dull and even dangerous shoreline walk will be upgraded by design, programming, and become highly accessible from the adjacent urban neighborhoods.

The design connects the city's HINTERLAND neighborhoods and landmarks to waterfront with distinct "windows" and "lines," making the once discontinuous single walkable promenade. By decoding the social DNA of Shekou, the programming of open space blends old and new cultures at the waterfront, creating a mixed flavor of old fishing village, urban beaches and terraces, industrial relic pier parks, and waterfront shopping promenade that attract people year around.



SHENZHEN BAY SHEKOU PROMENADE
CULTURE LINES FROM HINTERLAND



景观构建策略 / Strategies



HILLS – SEA – COASTAL LINE
山海岸线关系的变迁

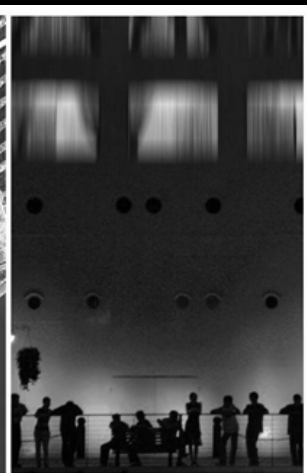
----- 1979
————— 2014



1984. ROW & SWIMMING BEACH BY THE HILLSIDE



2014. LAND-LOCKED SHIP BECOMES THE ENTERTAINMENT COMPLEX AT SEA WORLD – SHEKOU'S LIFESTYLE NEIGHBORHOOD



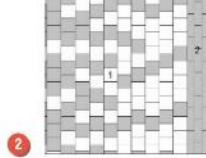
Celebrate Shekou's coastal living experience once at its historical shoreline, which has become the hinterland after years of urbanization and landfill.

Transforming the industrial waterfront to a socially resilient and celebrated place for old and new generations, 6.6 KM long promenade choreographs many defining moments with one leisure belt

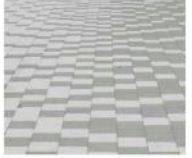


DEFINING MOMENTS

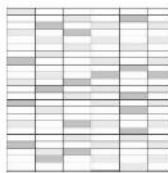




2

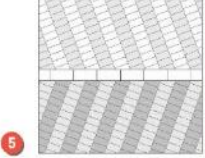


3



1. SIZE: 300x300mm
 COLOR: LIGHT AND DARK GREY 浅灰与深灰
 MATERIAL: GRANITE 花岗岩
 FINISH: FLAMED FINISH 火烧饰面

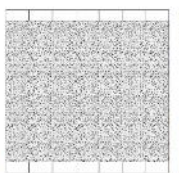
2. SIZE: 150x500mm
 COLOR: DARK GREY 深灰
 MATERIAL: GRANITE 花岗岩
 FINISH: FLAMED FINISH 火烧饰面



5



4



SIZE: 150x300mm 150 X 300毫米
 COLOR: LIGHT, MEDIUM AND DARK GREY 浅灰, 中灰与深灰
 MATERIAL: GRANITE, HERRINGBONE PATTERN 花岗岩, 交叉锯齿图案
 FINISH: FLAMED FINISH 火烧饰面

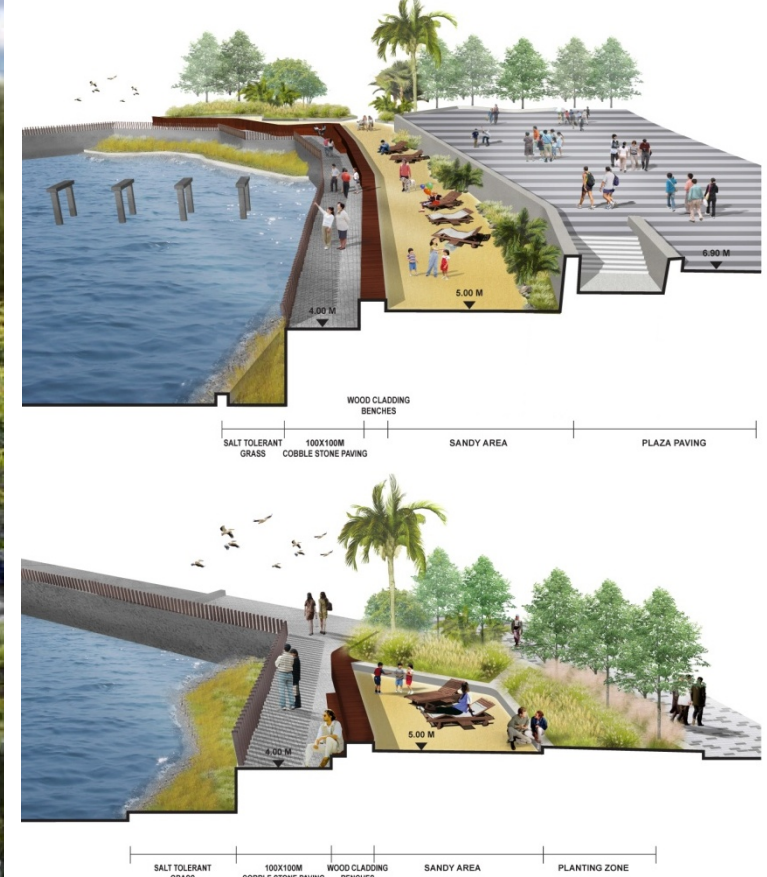
WIDTH OF BIKE PATH: 3.5m 3.5米自行车道
 COLOR: LIGHT PURPLE 浅紫色
 MATERIAL: THICK ASPHALT 厚沥青

SIZE: 150x500mm 150 X 150毫米
 COLOR: LIGHT GREY 浅灰
 MATERIAL: GRANITE STONE BLOCK EDGE 花岗岩石边

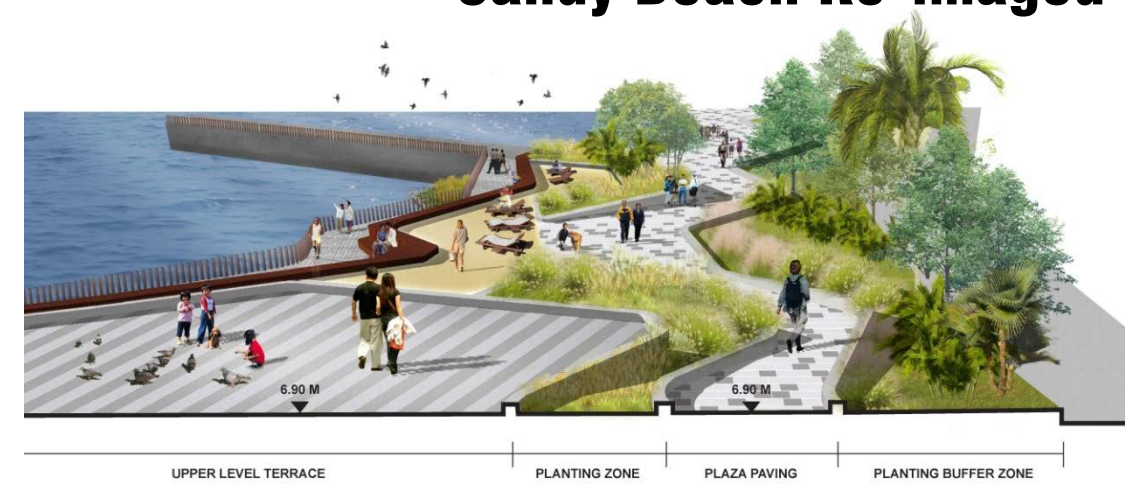
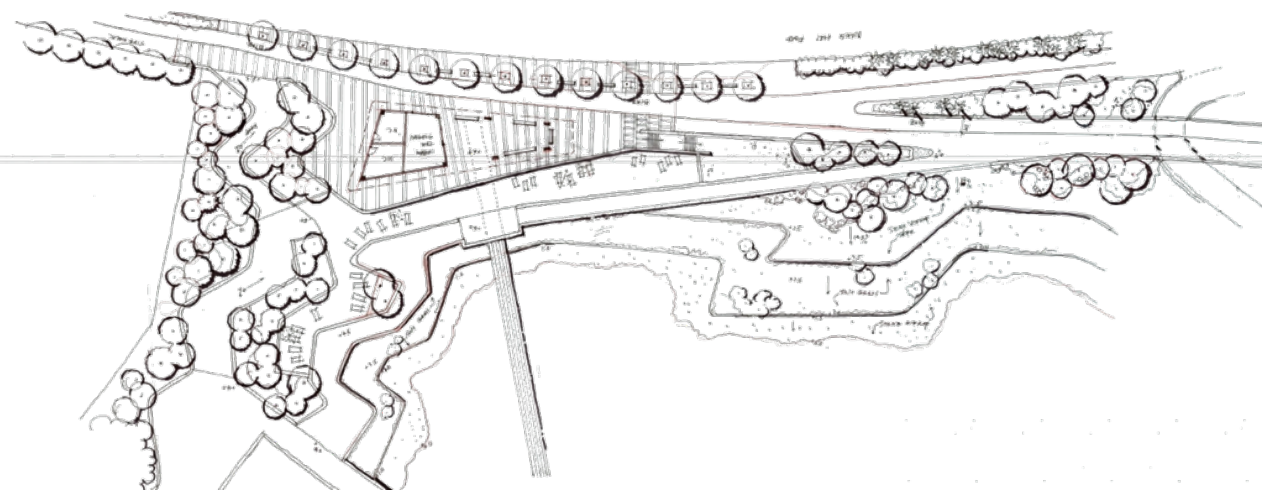


Shekou Promenade Phase II

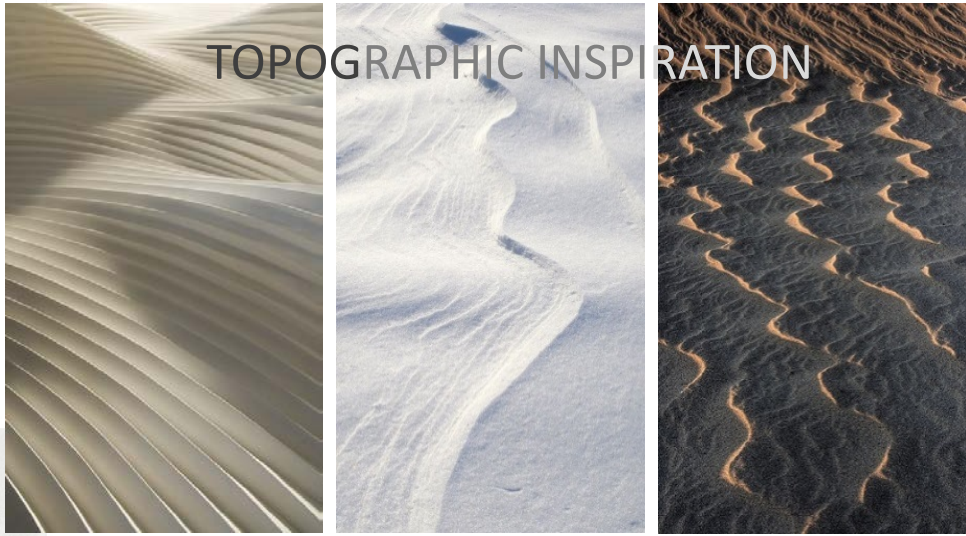
- Peninsula



Sandy Beach Re-imagined



TOPOGRAPHIC INSPIRATION



Shekou Promenade Phase I
- Nature Park Overall Plan

Rolling topography



Textured garden



Water /sand intertwined

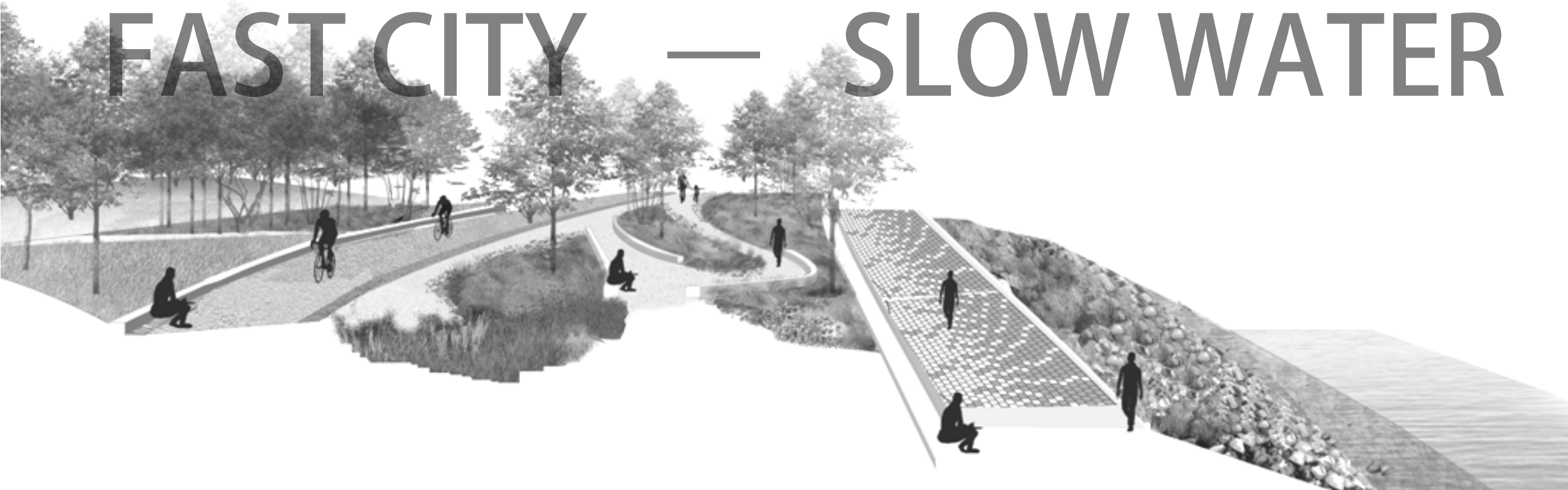


Inter-tidal garden



Place Making Concept

FAST CITY — SLOW WATER





GRANITE SEAT



WOOD BENCH



GRANITE BLOCKS



HIGH TIDE PATH PAVING

Place Making Elements

